



AVIONICS CATALOG

DYNON SKYVIEW AND PORTABLE PRODUCTS FOR
EXPERIMENTAL AND LIGHT SPORT AIRCRAFT



Transforming aviation through technology

In 2000, we were frustrated with the lack of affordable modern avionics for sport aircraft and decided to do something about it. The result? Dynon led a sea change in modern GA aircraft avionics, equipping over 20,000 sport aircraft owners that previously couldn't imagine an affordable glass cockpit.

A SkyView panel can truly do it all: it's your primary flight instruments, full-featured engine monitor with fuel computer, a class-leading moving map and navigation platform, ADS-B traffic and weather, integrated Mode-S Transponder with ADS-B Out capability, an approach-capable autopilot that offers simplified or expert controls, a revolutionary COM radio, and more.

The flagship SkyView HDX features a clear, vibrant high-resolution display with breakthrough ergonomics, a refined touch interface, and beautifully-designed all metal and glass construction that is worthy of your aircraft. SkyView SE is the entry-level successor to Dynon's simple and intuitive legacy D100 series products that allows simple VFR aircraft to affordably equip with 2020 compliant ADS-B Out. All of these innovations are designed to reduce your workload so you can just... Go Fly.

Our Values

We are THE avionics company for light aircraft. It's all we do. We constantly innovate and firmly stand behind our products with the industry's best support. We don't think you should have to cut a new panel every time we come up with a new idea, and the product you buy should be supported for years. The first SkyView ADAHRS ever shipped is fully compatible with the latest SkyView HDX, SE, and Classic displays. The EFIS-D10A we first made a decade ago is still supported today, and can now be installed in type certificated aircraft through our Dynon Certified line of products.

When you buy Dynon, you're buying from a US company. We design, engineer, manufacture, and support our products in Woodinville, Washington and Canby, Oregon. Most of our engineers are pilots, many of them homebuilders. We fly behind the products we build, and we think it shows. Half of Dynon Avionics' staff is manufacturing (in those same US offices) because building our products in-house is the most effective way to control quality and cost.

We don't think your avionics should demand that you be an engineer or "beta tester." Though your aircraft may be experimental, your avionics should run stable software that is tested, documented, and a delight to use. The modules that comprise your system should be designed for one another, with robust and redundant data connections that are hardened against failure.

You're a builder, but you're probably not an electrical engineer. Unlike the competition that requires you to build complicated harnesses or buy expensive ones, many Dynon components connect via affordable, prefabricated SkyView Network cables. Other Dynon harnesses are color-coded and match our manuals to help you speed through installation. For those that want the fastest path to flight, our Advanced Flight System division offers the revolutionary **ADVANCEDPANEL** system. These complete avionics panel solutions are professionally engineered, fully assembled, tested, configured, and ready to install in your aircraft. Best of all, almost all of the equipment in the panel, down to the switches, are made by the people that design and manufacture the avionics.



TABLE OF CONTENTS

SKYVIEW SYSTEM

SkyView Introduction.....	4
SkyView Features.....	5-6
SkyView SE	7
SkyView Classic	7
SkyView HDX.....	8

SYSTEM COMPONENTS

Components.....	9-12
Accessories.....	13
System Comparison	14

PANEL CONFIGURATION POSSIBILITIES

Capabilities and Equipping	15
Light and Sporty and Weekend Warrior.....	16
Cross-Country Cruiser	17
The Airliner	18

SYSTEM WORKSHEET

Primary Flight Displays and Navigation.....	19
Dynon AOA/Pitot Probes	19
Engine Monitoring.....	20
Dynon Autopilot.....	20
Transponders, ADS-B In/Out, Traffic and Weather.....	20
Radios, Intercom and Audio.....	20

DYNON PORTABLE

D3 Pocket Panel	21
-----------------------	----

PANEL PLANNER (ACTUAL SIZE CUT OUTS)

SkyView HDX 10" Display	22
SkyView 10" Display (Classic and SE).....	23
SkyView 7" Display (Classic and SE).....	24
Dynon Control Panels (Horizontal)	24
Dynon Control Panels (Vertical)	25
SkyView HDX 7" Display	25
SkyView HDX 10" Display	26

DYNON

AP 5524 GND® 21:54:52 U KPAAE 132.950 TWR2 KPAAE 128.650 ATIS KPAAE

82 KTS TAS
10 GS

1700 FT
300
200
100

330
330
330

29.47 IN DA 621 OAT 14c

SKYVIEW
-----NM

ADS-B STATUS RECEIVING
NEXRAD RGNL AGE: 03:34
NEXRAD CONUS AGE: 03:34

330
330
330
330

25 25
LEFT GAL RIGHT GAL

MAP 19.2 INHG RPM 2070 GAL/HR 6.3
ROP 48% HOBBS 994.0 TACH 623.0 GALS REM 50.0

16 191 60
FUEL PSI OIL °F OIL PSI

CHT 361 361 361 361 °F
°F 845 845 845 845 EGT

28.0 BATT VOLTS
12 AMPS

07:56 TIME REM
0 10 20 30 40
TRIM FLAPS

(HDG) → NRST INFO FPL MENU DISPLAY NO MSG (MAP)

BOOST PUMP STROBE

NAV

SkyView™

Technology, Capability, Affordability: FLYDYNON

You want to fly your plane, not mess with a computer. From the beginning, Dynon's pilots and engineers designed SkyView to have a clean and intuitive pilot interface through its on-screen buttons and joystick knobs. The flagship SkyView HDX augments those traditional controls with an intuitive, refined touch interface that is a delight to use.

Whether you're new to glass cockpit technology or fly 777s at work, there's a SkyView panel for you. If you're new to glass, SkyView's "six-pack" flight instrumentation mode lets you fly the gauges you're used to with the digital "EFIS

end of your outstretched arm and it's moving with the aircraft, not with you. These two things conspire to make touch control less than ideal when things get bumpy. Starting with those challenges, we designed a touch interface specifically for the cockpit. Touch actions are designed to be intuitive and easy to learn, and used in places where they can reduce pilot workload the most. For example, touching the transponder or autopilot status displays instantly enables those features' controls, eliminating the traditional button pushes required to access those menus. Similarly, touching an item that can be adjusted on the PFD instantly reassigns a knob



glass cockpit" presentation just a few taps away. Try out the "EFIS" style as you get comfortable. Or not. It's up to you. Learn about SkyView features with extensive training videos on The Dynon Channel at dynonavionics.com/videos.

If you like dedicated tactile controls, you'll be right at home with SkyView. All SkyView displays have a complete set of buttons and knobs - even those that feature a touchscreen. The optional knob control panel assigns the items you adjust most to dedicated knobs to lower pilot workload. Similarly, the Autopilot control panel removes the need to ever use the on-screen menu for Autopilot mode changes. If you have the panel space, these modules are simply the right way to interact with your avionics. The touchscreens on SkyView HDX and are designed to complement SkyView's tactile interface, not completely replace it. This allows you to rely on SkyView's complete set of buttons and knobs when you need them most; critical for effective control in turbulence. While you usually hold a smartphone or tablet in your hands, your EFIS screen is at the

to the touched item, eliminating the need to manually re-task it. Use your fingertips to pan, zoom, and select items on the map - exactly as you'd expect it to.

SkyView HDX displays have a similar installation footprint as original SkyView Classic and SkyView Touch displays, enabling an affordable upgrade path that doesn't require cutting a new panel or even a single wire change. SkyView SE is the simplest and least expensive member of the SkyView family. Made specifically for VFR aircraft and pilots, SkyView SE features simple and clear displays, and almost no menus to navigate in flight. At the same time, SkyView SE retains innovative Dynon capabilities like SkyView's revolutionary COM radio interface and optional 2-axis autopilot. By removing SkyView's mapping capabilities, even the 7" SkyView SE display has a large, easy-to-read Primary Flight Display, including pilot-selectable six-pack of "steam gauges." With a simplified feature set, SkyView SE is the successor to Dynon's legacy D100 series products. Best of all, SkyView SE systems are similarly priced to their D100 series equivalents.

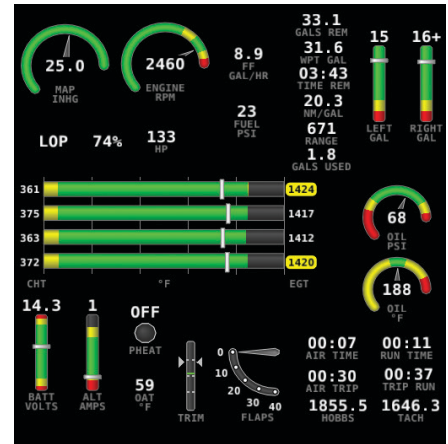
SKYVIEW FEATURES



SkyView's PFD display enhances situational awareness with realistic and accurate 3D depictions of runways, obstacles, terrain, and water.



New to glass? SkyView's "six-pack" mode bridges retro analog gauges with the state-of-the-art.



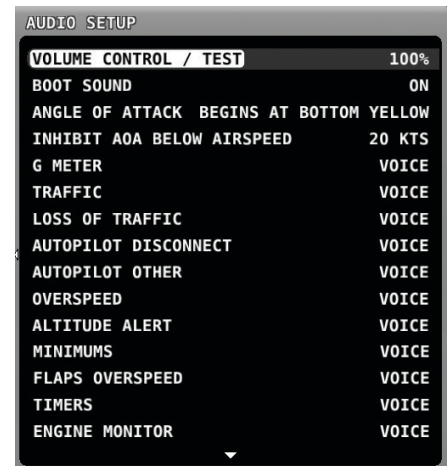
The tools you need to completely manage your power plant, including the industry's only automatic EGT lean/rich mixture detection that requires no pilot action and the most accurate percent power calculations possible.



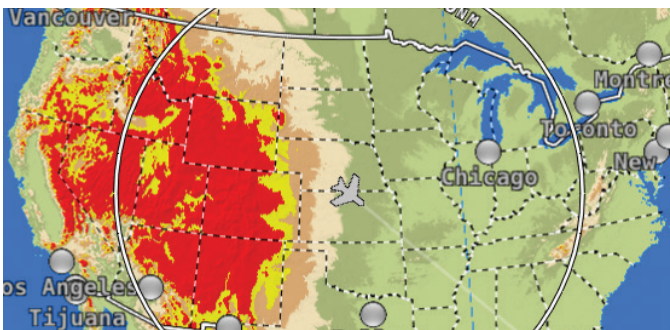
Connect up any device with S-Video or composite output with the optional video input adapter. Perhaps a forward looking taxi camera for your tail-dragger.



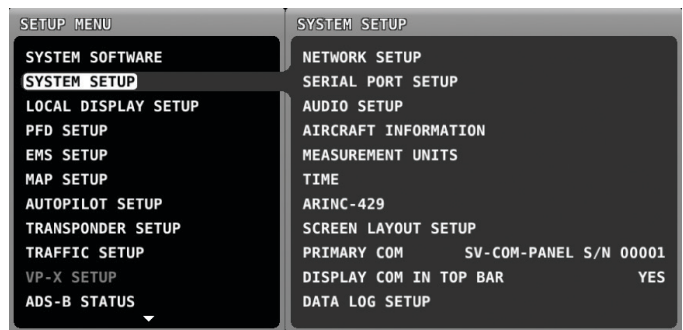
Equip with the SV-ADSB-472 to gain graphical NEXRAD weather radar imagery, text METARs, TAFs, winds aloft, traffic, and more.



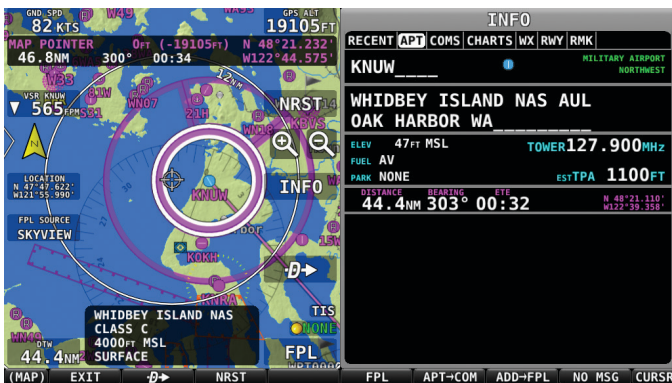
Voice alerts detail specific warning and caution conditions as they occur. A tone that gains intensity as your angle-of-attack increases helps you grease your landings and avoid stalls before they happen.



SkyView's free worldwide terrain data is the highest resolution available. Terrain colors are designed to look similar to charts while you're en route. They alert in vibrant yellow and red when altitude clearance is a factor.



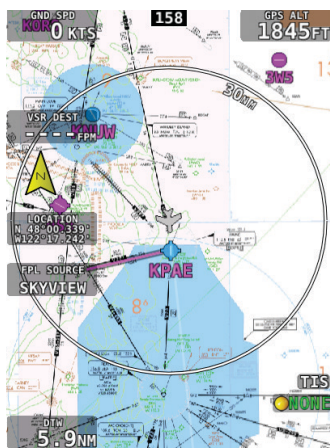
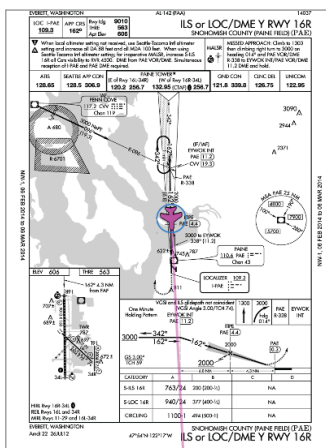
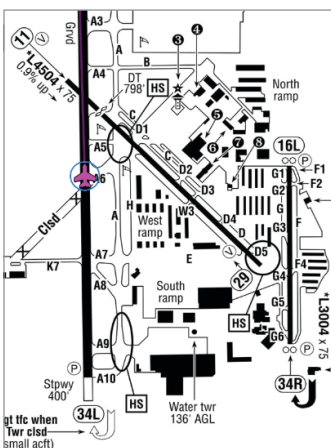
You shouldn't have to be a computer programmer to install your avionics: An intuitive, hierarchical setup menu helps you configure your system with ease.



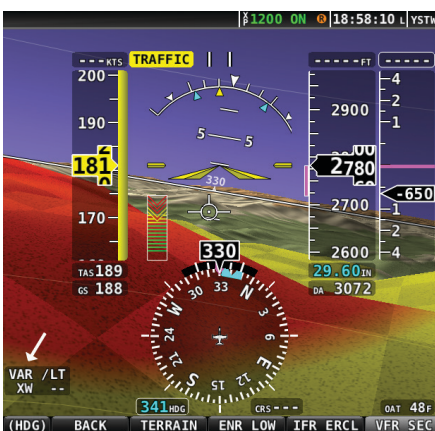
Point at airports, airspaces and more for instant information about them right on the map. From there, one button press gets you virtually all the information available for airports, including TPA, frequencies, services, charts, weather, and even the airport facility directory remarks.



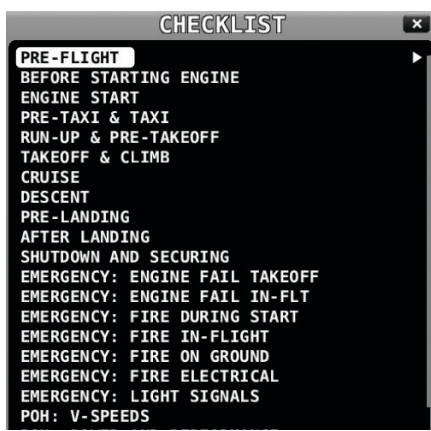
SkyView's navigation engine flies like you would. It anticipates waypoints and turns just before them to avoid needless overshoots. You can even display the graphics and waypoints from external IFR GPS flight plans.



With procedure charts (plates), airport diagrams (including ~5000 Flight Guide diagrams in the US), IFR en route charts, VFR sectionals, and SkyView's own map, you can truly achieve a paperless cockpit at the lowest prices in the industry.



Predictive terrain alerts dynamically shade terrain in yellow or red, based on the aircraft's projected flight path.



Checklists help remove paper clutter from the aircraft. Add as many checklists as you like - they're easily created and edited on any computer.



Plan your flight at home using your favorite planning application, then save time at the airplane by sending the planned route to your SkyView system via the Wi-Fi Adapter.

SKYVIEW SYSTEMS

From the entry-level SkyView SE to the flagship SkyView HDX, there's a SkyView system for every aircraft configuration and budget.

SKYVIEW SE



SkyView SE displays are made specifically for VFR aircraft and pilots who want the most intuitive flight and engine instruments on the market. They feature simple and clear displays, with almost no menus to navigate in flight. SkyView SE systems omit mapping, synthetic vision, and IFR capabilities to offer an affordable SkyView-based entry-level system. At the same time, SkyView SE retains modern, innovative Dynon EFIS capabilities like SkyView's revolutionary COM radio interface and 2-axis autopilot with simplified controls. For aircraft in the US market, SkyView SE systems equipped with Dynon's Mode S transponder and SV-GPS-2020 offer the lowest cost integrated glass panel system meeting FAA 2020 ADS-B Out requirements. SkyView SE displays can only connect to other SkyView SE displays.



10" Display



7" Display

Weight: SV-D900 - 3.3 lb. (1.5 kg)
SV-D600 - 2.4 lb. (1.1 kg)
Power: SV-D900 - 2.0A @12V DC
SV-D600 - 2.1A @12V DC

PART#	NOTES	PRICE
SV-D900	10" Screen	\$2495
SV-D600	7" Screen	\$1495

SKYVIEW CLASSIC



The original next generation EFIS. Even without a touch screen, SkyView's intuitive controls and pilot-designed interface are designed to work in your cockpit.



10" Display



7" Display

Weight: SV-D1000 - 3.3 lb. (1.5 kg)
SV-D700 - 2.4 lb. (1.1 kg)
Power: SV-D1000 - 2.0A @12V DC
SV-D700 - 2.1A @12V DC

PART#	NOTES	PRICE
SV-D1000	10" Screen	\$2995
SV-D700	7" Screen	\$2395

HDX THE PREMIER SkyView EXPERIENCE™

SkyView HDX is the flagship SkyView system from Dynon, the market leader in experimental and light sport avionics. HDX features improved displays, beautiful design, unrivaled control ergonomics, and an intuitive and refined touch interface.

HD Clear, Vibrant Displays: SkyView HDX features brighter, higher-resolution HD touchscreen displays with wider viewing angles and improved anti-reflective properties for the sharpest picture ever.

Beautiful Design: SkyView HDX's modern, elegant design features robust metal and glass construction that is worthy of your aircraft.

Unrivaled Control Ergonomics: SkyView HDX expands the SkyView philosophy of combining full physical controls with a touchscreen. SkyView HDX's angled control panel allows for natural hand positioning, reducing fatigue. The wide, sculpted ledge allows you to anchor your hand for precise control in turbulence. New knobs have positive and crisp movement, and all controls are now fully-backlit for night flight.

Improved Touch Interface: SkyView HDX features icon-driven touch controls and simplified screen navigation for reduced workload. The new engine monitor instrument band along the bottom of the screen affords an ideal instrument scan. The expansive glass display features edge-to-edge touchability with no bezel in the way.

Capable and Compatible: SkyView HDX utilizes the same components and modules as existing SkyView systems. It also features a similar mounting footprint and wiring as other SkyView displays, allowing easy upgrades for pilots already flying behind SkyView.



10" Display



7" Display

Weight: SV-HDX1100 - 3.35 lb. (1.52 kg)
 SV-HDX800 - 2.75 lb. (1.25 kg)
 Power : SV-HDX1100 - 2.40A @12V DC
 SV-HDX800 - 2.10A @12V DC

PART#	NOTES	PRICE
SV-HDX1100	10" HD Touch Screen	\$4490
SV-HDX800	7" HD Touch Screen	\$3190

COMPONENTS

All components are compatible with Dynon's SkyView HDX, SkyView Classic, and SkyView SE, except where noted.

VHF COM Radio



SkyView's revolutionary COM radio interface will change the way you fly with dedicated buttons for tuning Tower/CTAF, ATIS/WX, ATC, and Ground frequencies.

Weight: 1.13 lb (0.51 kg)
Power: 0.2A Receive, 2.0A Transmit @12V DC for SV-COM-X83 / X25

MODEL#	NOTES	PRICE
SV-COM-X25	Horz. & Vert. versions; 25kHz spacing only. TSO'd transceiver.	\$1295
SV-COM-X83	Horz. & Vert. versions; 8.33 kHz spacing. TSO'd transceiver.	\$2195

Autopilot Control Panel



Individual buttons for all autopilot modes let you use your SkyView menus exclusively for other features like navigation and flight planning. Built-in 2-axis speed-sensitive trim controller.

Weight: 0.3 lb. (0.15 kg)
Power: 0.05A @12V DC

MODEL#	NOTES	PRICE
SV-AP-PANEL	AP panel button features require use of autopilot in expert mode. Panel button features not compatible with SkyView SE. However, when mounted remotely, trim motor controller and autopilot auto-trim features are compatible with SkyView SE.	\$579

Knob Control Panel



Dedicated controls for your barometric altimeter setting and the two bugs you use the most.

Weight: 0.4 lb. (0.18 kg)
Power: 0.07A @12V DC

MODEL#	NOTES	PRICE
SV-KNOB-PANEL	Available in horizontal and vertical versions.	\$295

Two-Place Stereo Intercom



Stereo, two-place intercom with audio connectivity for EFIS alerts and music that is usually only found in full-size audio panels.

Weight: 0.45 lb. (.204 kg)
Power : 0.1A @12V DC

MODEL#	NOTES	PRICE
SV-INTERCOM-2S	Includes horizontal and vertical faceplates, stereo headset jacks.	\$295

5-Port Network Hub



Join up to 5 SkyView Network Cables together, eliminating complicated splicing, with the SkyView Network Hub.

Weight: 3.2 oz (0.2 lbs)

MODEL#	NOTES	PRICE
SV-NET-HUB		\$60

ADAHRS - Primary and Secondary



Provides primary flight instruments, including attitude, airspeed, altitude, magnetic heading, DG, VSI, AOA, G-meter, turn rate, slip/skid ball, OAT, and TAS. Add a secondary ADAHRS for redundancy. SkyView and AFS EFIS systems will automatically cross-check your instruments for you. For aircraft where the desired ADAHRS placement would result in interference due to proximity to ferrous metal or power, an optional remote magnetometer is available.

Weight: 0.5 lb. (0.2 kg) for SV-ADAHRS-200/201, 0.46 lb. (0.21 kg) for SV-MAG-236
Power: 0.15A @12V DC

MODEL#	NOTES	PRICE
SV-ADAHRS-200	Primary	\$1350
SV-ADAHRS-201	Secondary / Backup	\$800
SV-MAG-236	Remote magnetometer (optional)	\$150

Engine Monitoring Modules

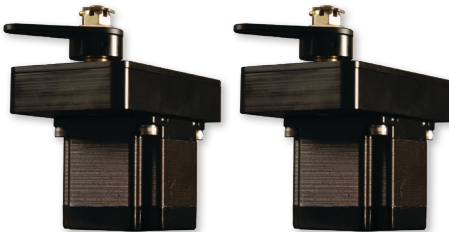


The EMS module receives signals from engine sensors for display on your EFIS. Order the SV-EMS-220 for most engines, SV-EMS-221 for the Rotax 912 iS and 915 iS. Engine sensor/harness packages for Lycoming/Continental/Jabiru/Rotax engines sold separately. Sensors/harnesses available à la carte for other engines. Two modules can be used to monitor dual engines or to provide up to 28 EGT&CHT inputs for large engines.

Weight: 0.63 lb. (0.29 kg)
Power: 0.11A @12V DC

MODEL#	NOTES	PRICE
SV-EMS-220		\$650
SV-EMS-221	For Rotax 912 iS and 915 iS	\$650
	Probe + Harness packages	\$190-1245

Autopilot Servos

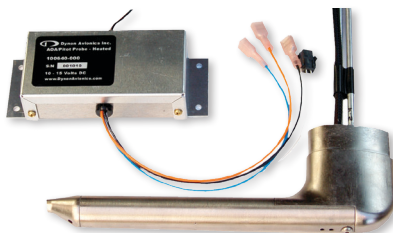


Just add servos to your system to add a fully IFR-capable autopilot. Mounting kits are available for various aircraft. The optional SV-AP-PANEL adds dedicated autopilot controls. It also features a digital, dual-axis trim controller with proportional speed control and autopilot auto-trim.

Weight: 2 lb. (0.9 kg) for SV32, 3 lb. (1.4 kg) for SV42, 4 lb. (1.8 kg) for SV52
Power: 1.3A / 2A / 2.8A @12V DC (at 100% torque)

MODEL#	NOTES	PRICE
SV32/42/52	Autopilot Servos	\$800 each
Various	Servo Mounting Brackets Kits	\$30-\$110

AOA / Pitot Probes



The rest of GA is starting to see the value of AOA as a major safety-enhancing device. Meanwhile, it's been available for all Dynon EFIS systems for over a decade. It provides progressive audible approach-to-stall alert.

Weight: 0.35 lb. (0.18 kg) for 100141-000, 0.72 lb. (0.33 kg) for the 100667-000 with controller
Power: 10A @12V DC (at Maximum Heat)

MODEL#	NOTES	PRICE
100141-000	AOA/Pitot Probe, Unheated (Underwing)	\$229
100667-000	AOA/Pitot Probe, Heated w/controller (Underwing)	\$450
100532-000	AOA/Pitot Probe, Unheated (Boom Mount)	\$229

COMPONENTS

Mode-S Transponders with ADS-B Out



Lightweight TSO'd Mode-S Transponder with TIS traffic reception (US only) and 1090ES ADS-B Out. US customers should choose the SV-XPNDR-261 for 2020 ADS-B mandate compliance (requires SV-GPS-2020 or other suitable position source).

Weight: 0.77 lb. (0.35 kg)
Power: 0.4A @12V DC

MODEL#	NOTES	PRICE
SV-XPNDR-261	Class 1, FAA 2020 ADS-B Out	\$2300
SV-XPNDR-262	Class 2, <175kts; <15,000 ft. only (Not For US)	\$1900

Traffic/Weather

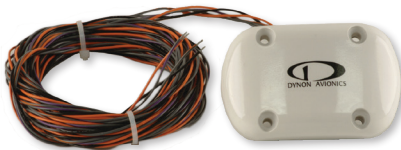


The dual band SV-ADSB-472 receives ADS-B traffic via 978 MHz (UAT) and 1090 MHz, and also receives NEXRAD, METARS, TAFS, and other weather information. Unlike portable ADS-B receivers, you get FULL ADS-B and radar traffic when you pair this with our SV-XPNDR-261 and SV-GPS-2020.

Weight: 0.3 lb. (0.12 kg)
Power: 0.05A @12V DC

MODEL#	NOTES	PRICE
SV-ADSB-472	Not compatible with SkyView SE.	\$795

GPS Receiver Module



WAAS-enabled, high-sensitivity GPS receiver/antenna. Provides multiple updates per second for superior mapping and synthetic vision. This module is weatherproof for external mounting.

Weight: 0.44 lb. (0.2 kg) for SV-GPS-250, 0.47 lb. (0.21 kg) for SV-GPS-2020
Power: 0.1A @12V DC

MODEL#	NOTES	PRICE
SV-GPS-2020	US ADS-B Out 2020 compliant when paired with an SV-XPNDR-261 transponder.	\$649
SV-GPS-250	Not recommended for use in US when equipping for 2020 ADS-B Out compliance.	\$249

IFR Connectivity: ARINC 429



Use this interface module for third-party certified IFR navigators like the Avidyne IFD440/540.

Weight: 0.4 lb. (0.18 kg)
Power: 0.1A @12V DC

MODEL#	NOTES	PRICE
SV-ARINC-429	Not compatible with SkyView SE.	\$475

Wi-Fi Adapter for SkyView



Connect SkyView to your mobile devices via the Wi-Fi Adapter, and use apps to flight plan from home and transfer once you're at the aircraft. Compatible with ForeFlight Mobile, PocketFMS EasyVFR, SkyDemon, Ozrunways, and FltPlan Go. One is required for each SkyView display installed in an aircraft, maintaining system redundancy.

Weight: 0.006 lb. (0.003 kg)
Power: 0.1A @12V DC

MODEL#	NOTES	PRICE
102405-000	Not compatible with SkyView SE.	\$39

Backup Battery



SV-BAT-320 provides at least an hour of power to a single SkyView display and all connected SkyView Network Modules, including the ADAHRS and EMS. Install one per display for maximum power failure redundancy.

Weight: 0.8 lb. (0.4 kg) - SV-BAT-320
 Power: 1.0A @12V DC (while charging)

MODEL#	NOTES	PRICE
SV-BAT-320	Rechargeable Li-Ion battery with internal protection circuit.	\$195

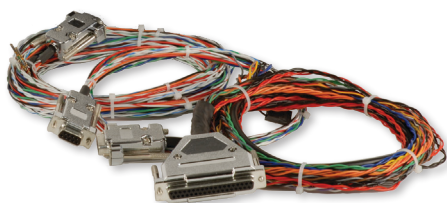
GPS Navigation Mapping



Now included with every display. Pricing for SkyView systems are now \$500 less than previous configurations. US aviation data available at no additional charge; non-US aviation data starting at \$119/year from PocketFMS and Jeppesen.

MODEL#	NOTES	PRICE
SV-MAP-270	SkyView SE does not have mapping features.	Included

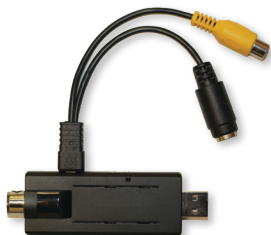
Harnesses/Network Cables



Prefabricated cables interconnect SkyView Network components to make sure your installation goes as smoothly as possible. These connect displays, ADAHRS, EMS, ARINC, COM radio, and Knob & AP control panels. Displays also have their own color-coded harnesses available, as do EMS sensor kits.

MODEL#	NOTES	PRICE
SV-NET-XXX		\$45-120
SV-ETHERNET-3CC	For multiple displays	\$29

Video Input Adapter



Display video from any s-video or composite source. Contact Dynon about SkyView display compatibility before purchase.

Weight: 0.14 lb. (0.065 kg)
 Power: 0.15A @12V DC

MODEL#	NOTES	PRICE
102211-000	For all SkyView systems except SkyView SE.	\$198

ACCESSORIES

Dynon now manufactures a range of builder support accessories to help pilots get from “first dream to first flight” as quickly as possible.

PITOT/STATIC/AOA PNEUMATIC INSTALL KIT



\$150

All the pneumatic tubing and connectors you need to install your Pitot, Static, and AOA. Includes static ports.

PITOT MOUNT BRACKET



\$98

Mounting bracket for Dynon Avionics AOA / Pitot Tube (both heated and unheated versions).*


ADAHRS TO ARINC MODULE STACKING KIT



\$39

All the parts you'll need to install and mount Dual ADAHRS Modules.

TRANSPONDER & ADS-B RECEIVER ANTENNA



\$39 EACH

Rod type (1090 MHz) Transponder Antenna and Rod type (978 MHz) ADS-B Receiver (UAT) Antenna.

INTERCOM HARNESS



\$240

A complete audio harness solution to connect a SV-INTERCOM-2S to a Dynon COM radio, SkyView displays, headsets, and other audio inputs.

AUTOPILOT LEVEL BUTTON



\$49

A dedicated backlit button for activating the “LEVEL” mode in SkyView's integrated Autopilot.

PANEL-MOUNT USB PORT WITH CABLE



\$49

Easily update software, databases, and download data logs with a panel mounted USB Port. Available in 12”, 24”, and 36” lengths.

TRANSPONDER HARNESS



\$75

SV-HARNESS-XPNDR Harness for SV-XPNDR-261/262 Transponder. 15' long.

SKYVIEW HARNESS ADS-B



\$65

SV-HARNESS-ADSB Harness for SV-ADSB-470 ADS-B Receiver. 15' long.

PANEL MODULE FACEPLATE BLANK



\$28

Includes 4 panel mount screws and 1 blank faceplate.

SKYVIEW PANEL-MOUNT SCREWS



\$9

A packet of 30 replacement panel mount screws to help install your SkyView System.

CONNECTOR KITS



\$12-19 EACH

D-sub 9-pin, 15-pin, and 25-pin Male and Female Connector kits for your SkyView System.

ORDER ONLINE AT SHOP.DYNON.COM

*This bracket was intended for use with Vans RV series aircraft. It may require significant modification for use in other aircraft.

SYSTEM COMPARISON

Not sure which SkyView system is right for your aircraft and mission? The table below contains the major differences between SkyView models. For even more detail, visit <http://www.dynonavionics.com/skyview-comparison.php>

	SKYVIEW HDX	SKYVIEW CLASSIC	SKYVIEW SE
Design and Interface			
Redesigned Knobs with Improved Movement and Feel	◆		
Angled Controls for Improved Hand Positioning	◆		
Anchor Rail Built into Bezel Sides	◆		
Backlit Controls	◆		
Touchscreen Display with Multitouch	◆		
Full Set of Buttons & Knob Controls	◆	◆	◆

Display			
HD Touch Screen, High Resolution, Sunlight-Readable, Anti-Reflective Display	◆		
High Resolution, Sunlight-Readable Anti-Glare Display (non-touch)		◆	◆

Primary Features			
Primary Flight Instruments	◆	◆	◆
Engine Monitoring	◆	◆	◆
Angle-of-Attack	◆	◆	◆
"Six-Pack" Flight Instruments	◆	◆	◆
Autopilot	◆	◆	◆ Simplified Mode Only
Mode S Transponder with ADS-B Out	◆	◆	◆
2020 FAA Mandate ADS-B Out Compliance	◆	◆	◆
Dynon COM Radio	◆	◆	◆
Synthetic Vision	◆	◆	
Mapping and Navigation	◆	◆	
ADS-B In Traffic / Weather	◆	◆	

Compatible SkyView Products			
SkyView Backup Battery	◆	◆	◆
SkyView Knob Panel (SV-KNOB-PANEL)	◆	◆	◆
SV-INTERCOM-2S	◆	◆	◆
SkyView Remote Magnetometer (SV-MAG-236)	◆	◆	◆
SkyView Autopilot Panel / Trim Controller (SV-AP-PANEL)	◆	◆	◆ Trim Control & Autotrim Only
SkyView ADS-B In Dual Band Receiver (SV-ADSB-472)	◆	◆	
SV-ARINC-429	◆	◆	
Wi-Fi Adapter	◆	◆	
Video Input Adapter	◆	◆	
External IFR Navigators	◆	◆	

PANEL POSSIBILITIES

You'd be surprised what you can fit in your aircraft when you choose Dynon. Our screen form-factors were designed with minimal bezels, made as narrow as possible. Even the tightest panels have room for two or even three displays, with display options in 7" and 10" form factors. The RV-8 panels on this page are examples of what you can accomplish in narrow tandem seat aircraft.

SkyView Classic and SkyView SE displays come in 7" and 10" versions. SkyView HDX displays, which have touchscreen, are available in 7" and 10" versions. SkyView SE displays can connect to each other, but do not operate with SkyView Classic or SkyView HDX displays.

Capabilities

Dynon Avionics glass panel systems comprise most of the avionics in your aircraft, with many components, like the transponder, mounted remotely so they don't take up valuable panel space.

In addition to primary flight instruments and a full-featured engine monitor, SkyView contains robust mapping and navigation capabilities. Simply point at or touch map features to learn more about them. Your avionics know enough about airports and airspace to let you keep your charts stowed. Terrain, obstacle, weather and traffic data guide you away from danger. An intuitive, robust flight planner lets you quickly route yourself to your \$100 hamburger. You can even send flight plans to your panel via Wi-Fi from popular apps like FlyQ and ForeFlight Mobile.

Equip your SkyView system with a full-featured two-axis autopilot just by adding affordable Dynon servos to the aircraft. This saves you thousands over a standalone autopilot. For pilots who value dedicated controls, the optional autopilot control panel ensures autopilot mode control is always at your fingertips.

SkyView's COM radio breaks the mold with a revolutionary pilot interface. Combine its knowledge of airport and ATC frequencies with dedicated buttons for tuning various frequency types, and you can literally fly across the country without ever manually spinning in a frequency. It will change the way you fly. Pair the COM radio with Dynon's Two-Place Stereo Intercom: it outclasses comparable products with ample inputs for SkyView alerts, stereo music, and other technology in your panel.

SkyView's SV-XPNDR-261 integrated Mode-S Transponder is a fully 2020-compliant ADS-B Out device when paired with a high integrity GPS source like our SV-GPS-2020, and it automatically switches AIR/GND modes when you takeoff and land. Add our dual band ADS-B receiver to gain even more situational awareness with a FULL traffic and weather portrait.

Equipping for your Mission: IFR vs. VFR

When equipping for IFR, redundancy is paramount. This means you want your critical flight instruments backed up to maintain your ability to aviate and navigate safely in an emergency. You can achieve this redundancy with a second display and ADAHRS, giving you "partial-panel" capability that really isn't partial at all. Additionally, your SkyView system continuously cross-checks multiple ADAHRS against each other to ensure the integrity of your primary flight instruments. Dual data paths in SkyView Network harnesses let your system caution you about emerging wiring problems without loss of function. Equipping at least one display with a backup battery safeguards against electrical failure, and a heated AOA/Pitot probe protects against inadvertent icing.

Many pilots also equip with a third-party NAV radio and/or certified GPS - such as the Avidyne IFD440/540 - for legal IFR flight navigation. An independent set of backup flight instruments is another option to consider

If you're equipping for VFR flight, the additional real estate provided by a second display is popular for displaying larger PFD, Engine, and Map pages than a single display affords. If you are looking for a simplified VFR experience without map and other features at the most affordable price point, SkyView SE might be right for your mission. No matter what your budget, you'll find that a Dynon-equipped panel will actually save you money and time compared to putting together a panel of disparate other products.

For both VFR and IFR aircraft, SkyView has chart subscription options at unprecedented low prices through partnerships with Seattle Avionics (US), PocketFMS (EU), AvPlan EFB (AU/NZ), OzRunways (AU), and Airmate (S Amer).

Depending on the provider/country, procedure charts (plates), airport diagrams, and VFR/IFR en route charts are available.

Light, Sporty

Looking for a simple, clean VFR panel for your sport aircraft? A single 10" SkyView SE Display can do everything you need, with all controls easily accessible on the front panel. The menu system is intuitive and logical to use. The left and right knobs make it fast and easy to make adjustments. For more capability, upgrade to a SkyView Classic or SkyView HDX, which adds navigation, mapping, and more.



A simple VFR aircraft can be fully-equipped, including ADS-B Out capability with just one SkyView SE display, a COM and Intercom in the panel. Other modules are mounted remotely.

Add a second SkyView display for more screen real estate. Dedicated knob and/or autopilot control panels offer direct control of frequently used SkyView features.

Weekend Warrior - Affordable IFR

Just because you're in a sporty tandem aircraft doesn't mean you can't also have the capability to fly through weather. A configuration like this, with dual displays, redundant ADAHRS, battery backup, and an IFR navigator equips you for legal, safe IFR flight.



Dynon displays and modules were designed with narrow bezels that hug the display. This lets us offer form factors that make equipping even the tightest panels possible. Add a second SkyView display for more screen real estate and redundancy. Dedicated knob and/or autopilot control panels offer direct control of frequently-used features.

PANEL POSSIBILITIES

Cross-Country Cruiser

Want a cross-country panel with more features for long distance travel? A second display makes navigating easier and is also a great backup. Add a control panel with dedicated knobs for Altitude, Barometer, and Heading/Track so they are always there for quick adjustments. The autopilot control panel adds immediate control of all autopilot modes.



With three expansive displays, you're actually equipped better than many airliners!



The Airliner

We admit, it's a lot of panel. But it's possible and extremely capable. Dynon's architecture supports configurations that span from a single display all the way up through what is shown here. In fact, the Glasair Sportsman that some of our employees built and fly has a similar three-screen configuration as this RV-10 example. Please ask one of us about it!



ADVANCEDPANEL

FROM DYNON AND ADVANCED FLIGHT SYSTEMS

LET US BUILD YOUR DREAM PANEL

Ask us about our complete and ready-to-install **ADVANCEDPANELs** for your aircraft. Professionally engineered, configured, and tested.

SYSTEM WORKSHEET

Description	List Price	SKYVIEW SYSTEM				Yours	Model Numbers
		SE VFR	Classic VFR	HDX VFR	HDX IFR		
Primary Flight Display (PFD) and Navigation							
7" SkyView SE Display	\$1495	\$1495					SV-D600
7" SkyView Classic Display	\$2395						SV-D700
7" SkyView HDX Display	\$3190			\$3190	\$3190		SV-HDX800
10" SkyView SE Display	\$2495						SV-D900
10" SkyView Classic Display	\$2995		\$ 2995				SV-D1000
10" SkyView HDX Display	\$4490			\$4490	\$4490		SV-HDX1100
Primary Wiring Harness - SkyView	\$124	\$124	\$124	\$248	\$248		SV-HARNESS-D37
ADAHRS - Primary	\$1350	\$1350	\$1350	\$1350	\$1350		SV-ADAHRS-200
ADAHRS - Second for Redundancy	\$800				\$800		SV-ADAHRS-201
Remote Magnetometer for SkyView (optional)	\$150						SV-MAG-236
GPS 5Hz Receiver/Antenna	\$249 *				\$249 *		SV-GPS-250
GPS Navigation Mapping Software (now included with display)	\$0		\$0	\$0	\$0		SV-MAP-270
ARINC-429 Interface Module (for IFR GPS interface)	\$475				\$475		SV-ARINC-429
SkyView Backup Battery	\$195		\$195	\$195	\$195		SV-BAT-320
SkyView Knob Control Panel (Vertical or Horizontal available)	\$295		\$295	\$295	\$295		SV-KNOB-PANEL (V/H)
Video Input Adapter	\$198						102211-000/AF-VIDEO
Wi-Fi Adapter (one per display required)	\$39		\$39	\$78	\$78		102405-000
Ethernet Cable – 3' (multiple displays only)	\$29				\$29		SV-ETHERNET-3CC
Network Cables: 6" / 8" / 10" / 1' / 1.5' / 2' / 3' / 6' / 10' / 15' / 20' / 25' / 30'	\$45/45/45/50/60 \$65/65/75/80/85 \$95/105/120	\$85	\$85	\$60, \$85	\$60, \$60, \$85		SV-NET-XXX
Network Splitter (for installing two ADAHRS)	\$110				\$110		SV-NET-SPL
Network 5 Port Hub (for installing more than two modules)	\$60				\$60		SV-NET-HUB
PFD & Navigation Subtotal:		\$3,054	\$5,083	\$9,991	\$11,774		

Dynon AOA/Pitot Probes							
Pitot Probe, Unheated - underwing	\$229	\$229		\$229			100141-000
Pitot Probe, Heated, w/controller - underwing	\$450				\$450		100667-000
Pitot Probe, Unheated - boom mount	\$229						100532-000
AOA/Pitot Subtotal:		\$229		\$229	\$450		

NOTES


★ Required if not using SV-GPS-2020

★★ Can be used for Trim Control when remote-mounted in SkyView SE installations. Autopilot controls are non-functional.

Additional Non-Dynon Avionics that may be needed: IFR-Certified GPS, Nav Radio, COM Radio Antenna.

Description	List Price	SKYVIEW SYSTEM				Yours	Model Numbers
		SE VFR	Classic VFR	HDX VFR	HDX IFR		
Engine Monitoring							
Standard Engine Monitoring Module / Module For Rotax 912 iS & 915 iS	\$650	\$650	\$650	\$650	\$650		SV-EMS-220 / 221
3' Network Cable (both end connectors)	\$65	\$65	\$65	\$65	\$65		SV-NET-3CC
Lyc/Cont/Superior, 4-cyl, Carbureted / Fuel Injected	\$1062 / \$1018		\$1018	\$1018	\$1018		EMSKIT-L4C / L4F
Lyc/Cont/Superior, 6-cyl, Carbureted / Fuel Injected	\$1245 / \$1205						EMSKIT-L6C / L6F
Rotax 912 / Rotax 912 iS	\$556 / \$310	\$556					EMSKIT-RTX / RTX iS
Jabiru 2200 / 3300	\$855 / \$1009						EMSKIT-J22 / J33
Fuel Flow Transducer	\$249				\$249		100403-003
Engine Monitoring Subtotal:		\$1,271	\$1,733	\$1,733	\$1,982		

Dynon Autopilot							
SV32, SV42, SV52 Servo, Roll and/or Pitch, Regular or Capstan	\$800	\$1600	\$1600	\$1600	\$1600		Various
SkyView Autopilot Control Panel (Vertical or Horizontal available)	\$579	★★			\$579		SV-AP-PANEL (V/H)
Network Servo Wiring Kit - 20'	\$80	\$160	\$160	\$160	\$160		SV-NET-SERVO
Network 5 Port Hub (for installing more than two modules)	\$60	\$60	\$60	\$60	\$60		SV-NET-HUB
Network Cable – with both end connectors, 1.5' or 3'	\$60 or \$65				\$60		SV-NET-1.5CC
Servo Mounting Brackets Kits - Various	\$89-110	\$178	\$178	\$178	\$178		Various
Generic Servo Connection Kit	\$30						101020-000
Autopilot Subtotal:		\$1,998	\$1,998	\$1,998	\$2,637		

Transponders, ADS-B In/Out, Traffic and Weather							
Class 1, Mode-S, FAA 2020 ADS-B Out compliant	\$2300	\$2300	\$2300	\$2300	\$2300		SV-XPNDR-261
Class 2, Mode-S (<175kts; <15,000 ft, not for US use)	\$1900						SV-XPNDR-262
High Integrity GPS for 2020 - ADS-B Out Compliant	\$649	\$649	\$649	\$649			SV-GPS-2020
ADS-B Dual Band Traffic and Weather	\$795		\$795	\$795	\$795		SV-ADSB-472
Transponder & ADS-B Subtotal:		\$2,949	\$3,744	\$3,744	\$3,095		

Radios, Intercom and Audio							
VHF COM Radio, 25 kHz (Vertical or Horizontal available)	\$1295	\$1295	\$1295	\$1295	\$1295		SV-COM-X25 (V/H)
VHF COM Radio, 8.33 kHz (TSO'd transceiver) (Vertical or Horizontal available)	\$2195						SV-COM-X83 (V/H)
Network Cable – with both end connectors, 1.5' or 3'	\$60 or \$65	\$60	\$60	\$60	\$60		SV-NET-3CC
2-Place Stereo Intercom (Incl. Vertical & Horizontal faceplates)	\$295	\$295	\$295	\$295	(3RD Party Audio Panel)		SV-INTERCOM-2S
Radio & Audio Subtotal:		\$1,650	\$1,650	\$1,650	\$1,355		

DYNON PORTABLE

D3 POCKET PANEL

PORTABLE TOUCHSCREEN EFIS WITH SYNTHETIC VISION

Meet the D3 - the newest edition of Dynon's popular Pocket Panel. Now featuring Synthetic Vision, the D3 Dynon Pocket Panel lets pilots supplement their often unreliable legacy instrumentation with an affordable, portable electronic attitude indicator. Both of the included cockpit mounting options require no tools, allowing the D3 to be deployed in any aircraft without regulatory approval.

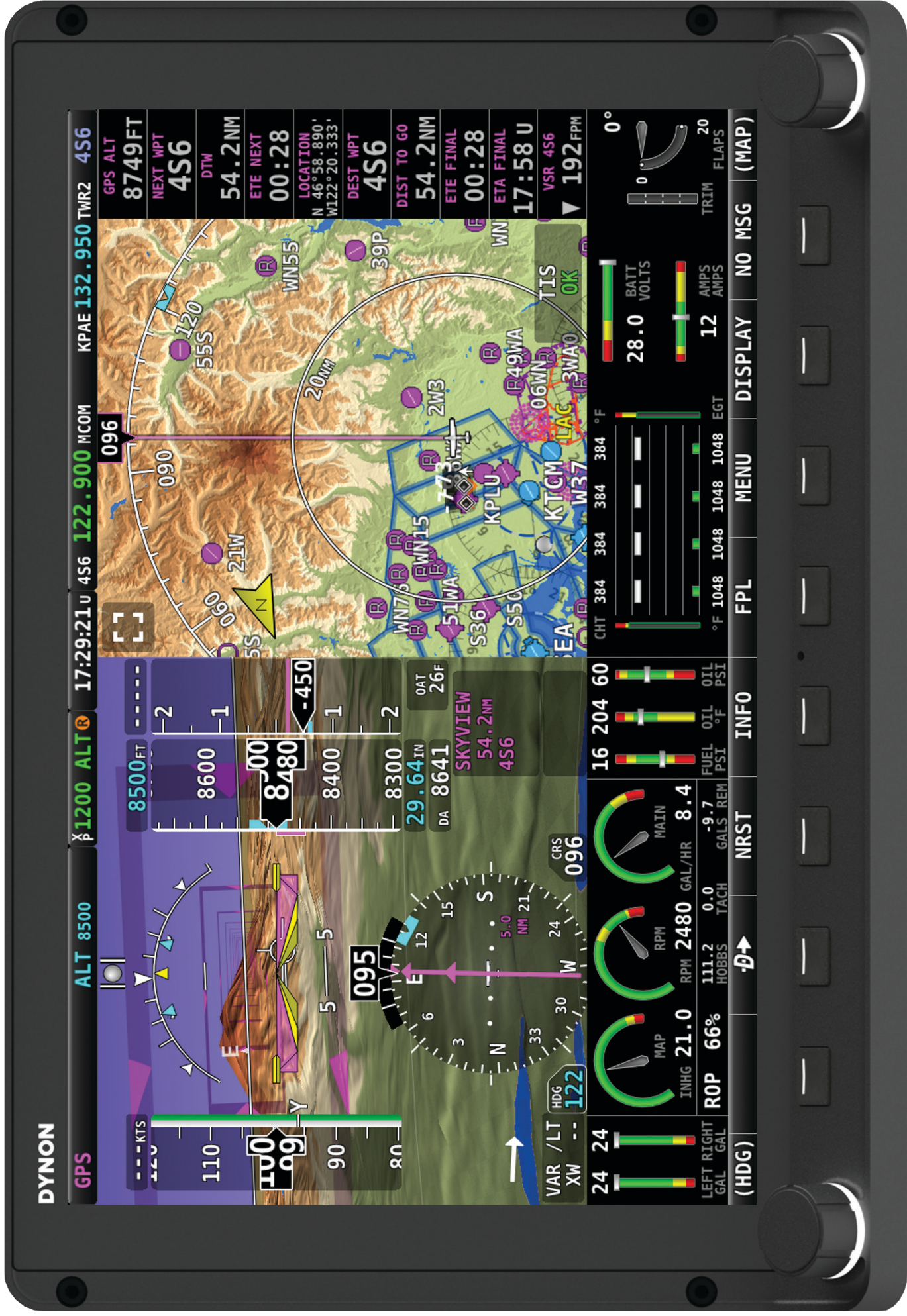


FEATURES

- **NEW** - Synthetic Vision
- **NEW** - Intuitive Touchscreen Interface
- **NEW** - Improved Brightness for Superior Sunlight Readability
- Accurate Pitch and Roll: A True Artificial Horizon
- Proven Dynon Attitude Sensing Engine
- Internal Li-Ion Battery for Extended Cord-Free Use
- Two Versatile Mounts Included
- GPS Ground Speed
- GPS Ground Track
- GPS Altitude and Vertical Speed
- Turn Rate
- Slip/Skid Ball
- G-Meter Page with Min and Max Indications
- Adjustable Brightness for Night Flight
- Truly pocket sized: Approximately 3½" x 3¼" x 1"

INCLUDES ALL MOUNTS AND ACCESSORIES

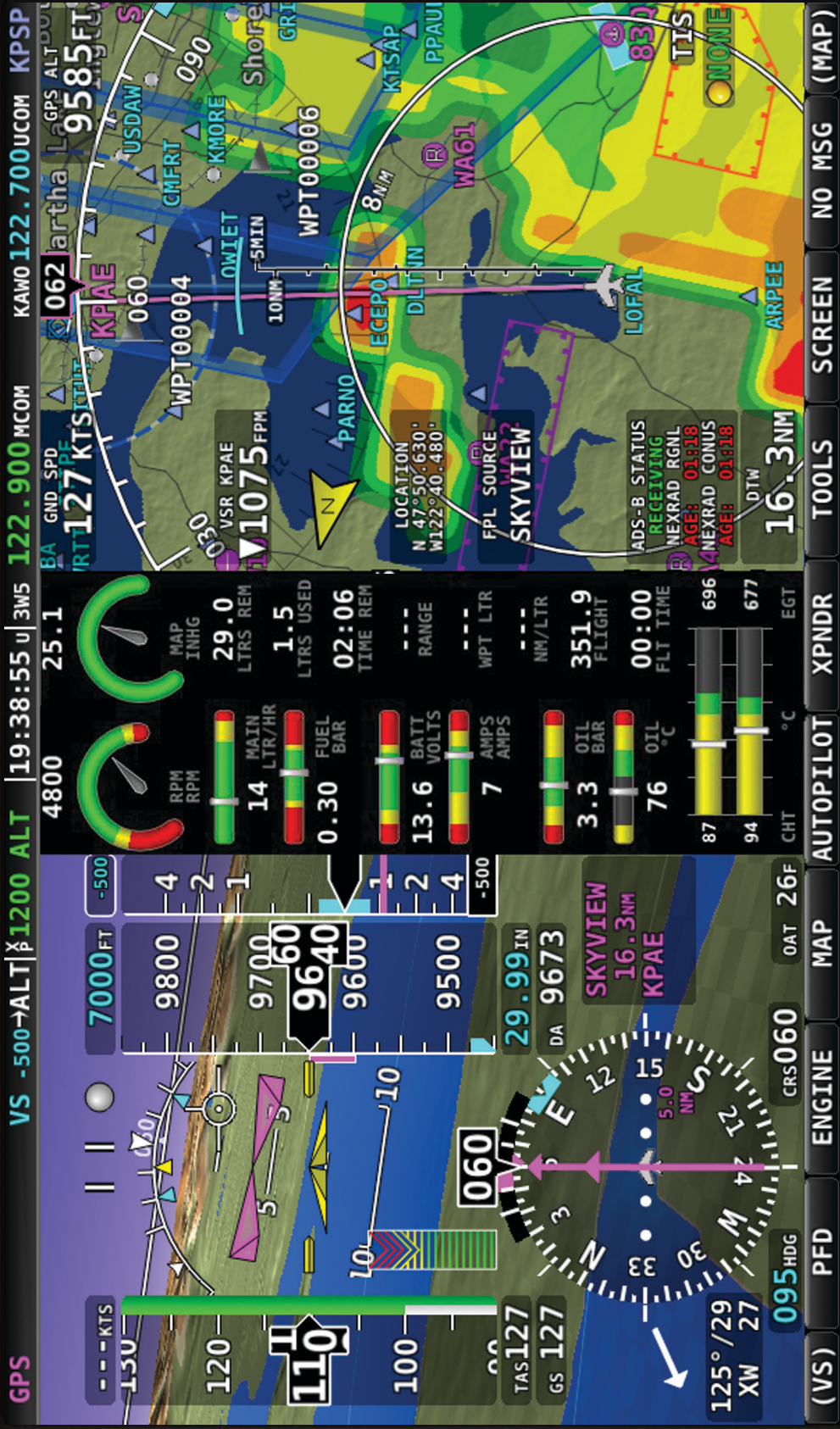
- AC Wall Charger
- DC Vehicle Charger
- Charging Cable
- Mounting Cradles (two included)
- RAM® Portable Suction Cup Mount
- Portable "Pinch" Mount for Standard 3-1/8" Instrument Hole
- External GPS Antenna (not required in many cockpits)



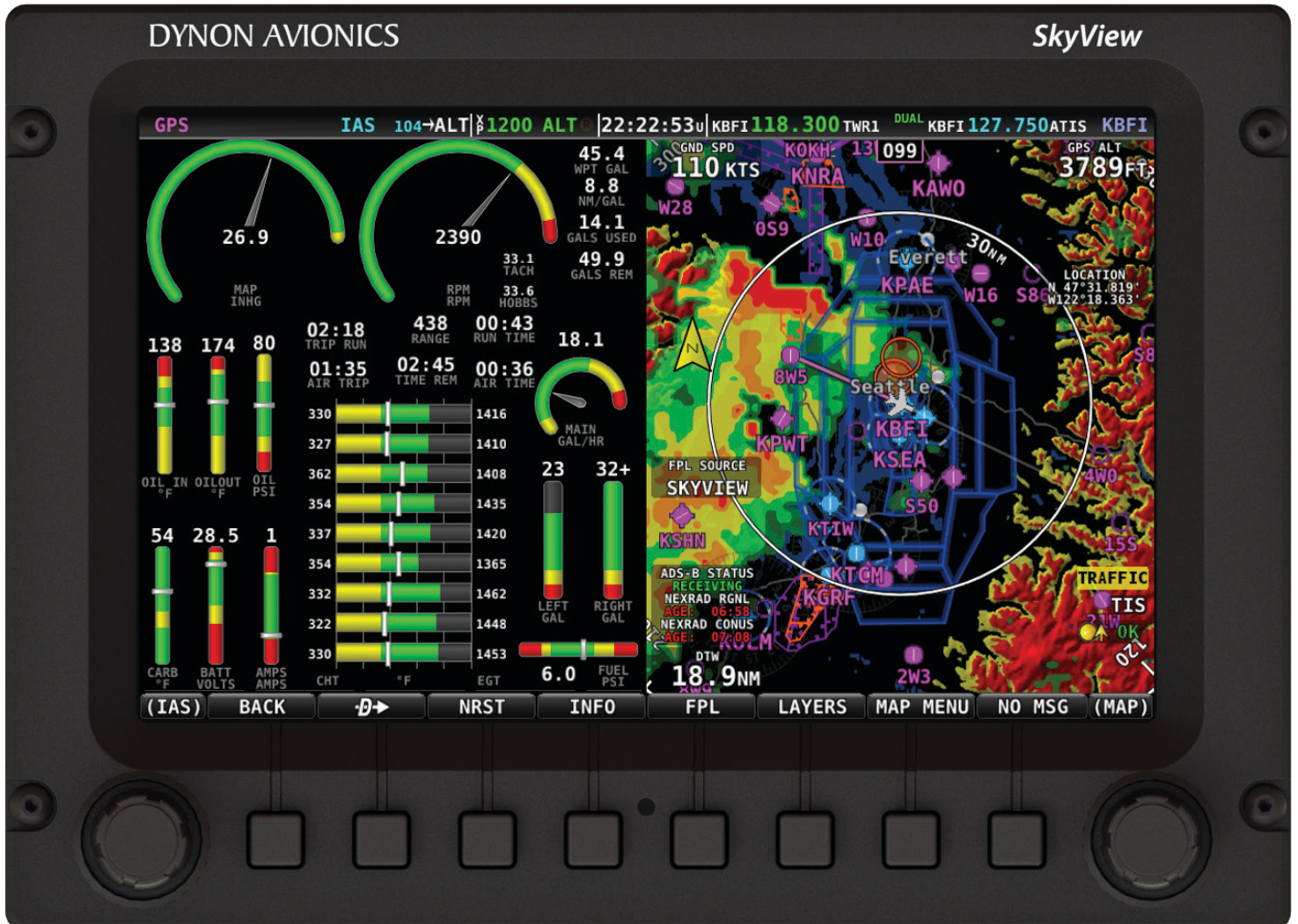
Actual size SkyView SV-HDX1100 10" Display
For planning use only. Do not use as a panel-cutting template.

DYNON AVIONICS

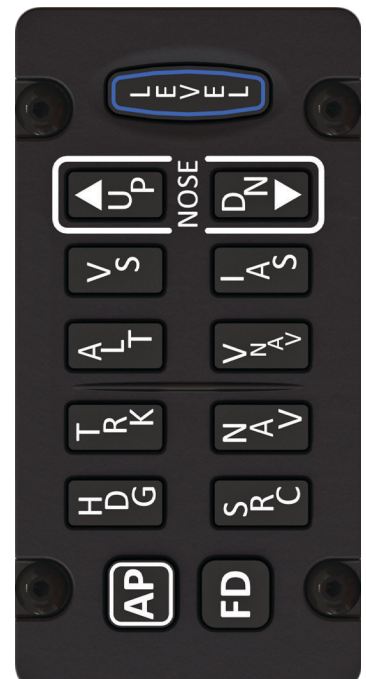
SkyView



Actual Size SV-D1000 / SV-D900 10" Display
For planning use only. Do not use as a panel-cutting template.



Actual Size SV-D700 / SV-D600 7" Display
 For panel cutouts and mechanical drawings go to: dynonavionics.com



Actual Size Control Panels
 For planning use only. Do not use as a panel-cutting template.



Actual size SkyView SV-HDX800 7" Display



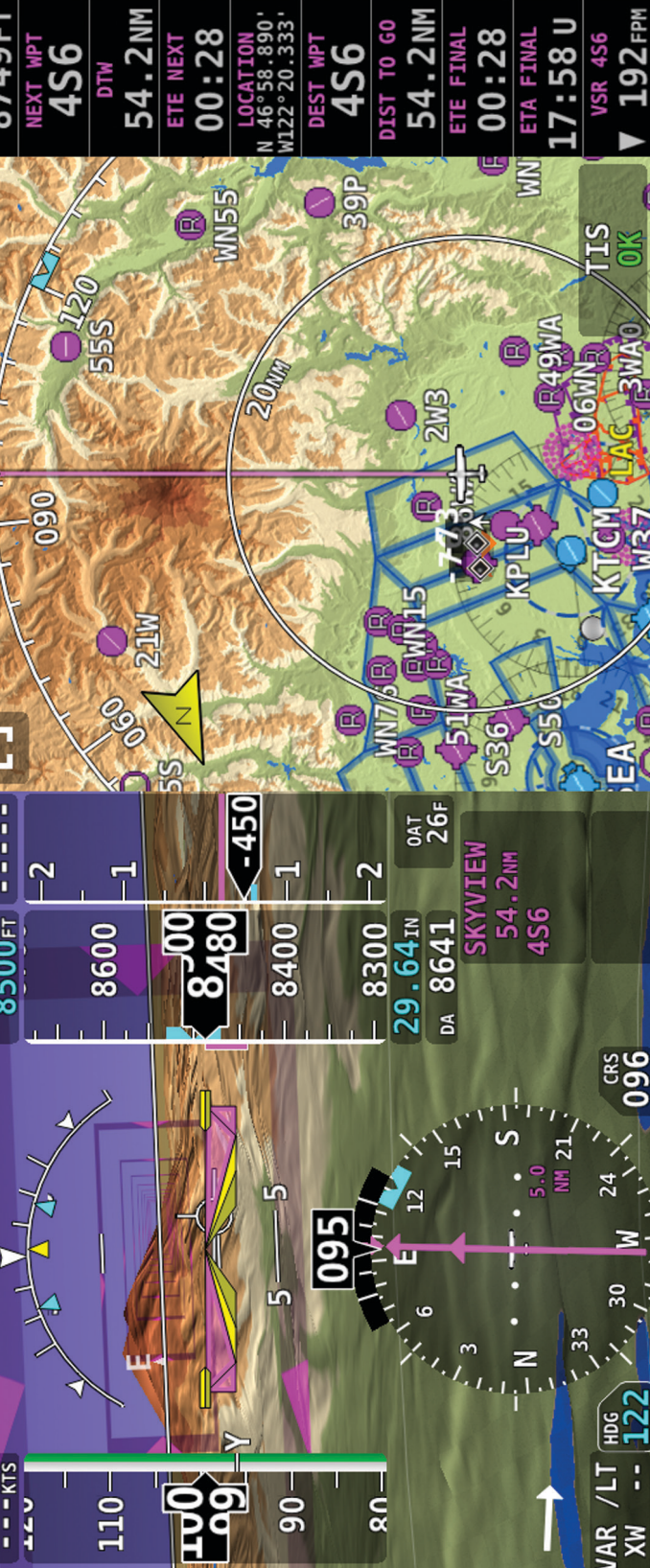
Actual Size Control Panels

For planning use only. Do not use as a panel-cutting template.

DYNON

GPS ALT 8500 17:29:21 U 4S6 122.900 MCOM KPAE 132.950 TWR2 4S6

GPS ALT 8749FT NEXT WPT 4S6 DTW 54.2NM ETE NEXT 00:28 LOCATION N 46°58.890' W 122°20.333' DEST WPT 4S6 DIST TO GO 54.2NM ETE FINAL 00:28 ETA FINAL 17:58 U VSR 4S6 192 FPM



Actual size SkyView SV-HDX1 100 10" Display
For planning use only. Do not use as a panel-cutting template.



19825 141st PL. NE, Woodinville, WA 98072
(425) 650-1269

DYNON.COM



@dynonavionics

