

## D2 Pocket Panel - Portable EFIS

# A little *Attitude* for *Everyone*

- ☑ Completely Portable.
- ☑ Hours of Battery Backup.
- ☑ True Attitude Indicator.



The Dynon D2 is a real, portable attitude indicators that can be used by ALL pilots. The D2 utilizes the same AHRS technology that has made Dynon the leading supplier of EFIS (Electronic Flight Information Systems) for experimental and light sport aircraft. Unlike smartphone apps, the D2 displays *true* aircraft attitude. Plus the D2 adds a G-Meter Display plus Wi-Fi data to iPads, smart phones and tablets.



"Compared to the old emergency fallback of a turn coordinator only to establish attitude after a vacuum pump failure the D1 is something like, well, about 100 times easier to fly."

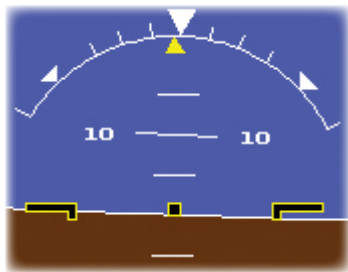
- J. Mac McClellan, *EAA Sport Aviation*, July 2012

"The D1, I've decided, is perhaps the perfect emergency backup flight display."

- Stephen Pope, *Flying*, October 2012

# D2 Pocket Panel - Portable EFIS

## A little *Attitude* for Everyone



True Attitude.  
Won't drift, and no caging for aerobatics



True gyro and accelerometer based slip and turn rate.  
Plus GPS ground track



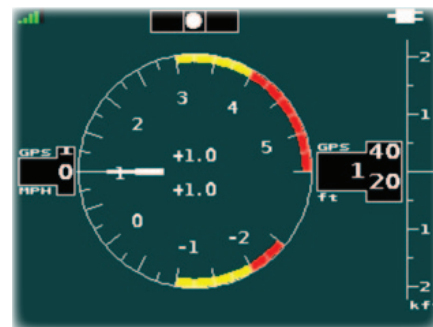
GPS ground speed



GPS altitude



GPS vertical speed



Load Factor G-Meter

### Features:

- ✓ Proven Dynon MEMS-based attitude sensors
- ✓ Accurate pitch and roll: A true artificial horizon
- ✓ Internal Li-Ion battery and GPS for hours of portable use
- ✓ Versatile portable mounts: RAM® suction mount and 3-1/8" panel hole "pinch" mount both included
- ✓ GPS ground speed and track (heading)
- ✓ GPS altitude and vertical speed
- ✓ Turn rate
- ✓ Slip/skid ball
- ✓ Dimmable screen for night flight
- ✓ Truly pocket sized, approx. 3 1/2" x 3 1/4" x 1"
- ✓ WiFi, which sends data for display on iPads, smart phones, and tablets using compatible aviation applications\*.
- ✓ Second page G-Meter displays current load factor and records minimum and maximum.

\*Compatible applications include WingX® Pro7™, FlyQ™, iHUD Remote™, and Air Navigation Pro™.



### D2 Included accessories:

- AC Wall Charger
- DC Vehicle Charger
- Mounting Cradles (two included)
- RAM® Portable Suction Cup Mount
- Portable "Pinch" Mount for Standard 3-1/8" Instrument Hole
- External GPS Antenna (for when the mounting location of the D2 prevents a clear sky view for good satellite reception)

### Description:

The D2 Pocket Panels is a true artificial horizon based on the same technology that drives Dynon's Electronic Flight Instrument Systems (EFIS).

MEMS-based AHRS (Attitude Heading Reference Systems) use calibrated solid state gyros and accelerometers to accurately determine true aircraft attitude without drift. A high-quality, highly sensitive GPS receiver is built into the D2 to provide GPS ground speed, altitude, vertical speed, and ground track for enhanced flight situational awareness.

With up to eight hours of battery life the D2 can be used all day with no connection to ship's power. A "cigarette lighter" DC vehicle adaptor is included if you want to keep it fully charged at all times, and the D2 can be set to turn on and off with the aircraft's battery master through the DC outlet.

WingX® Pro7™ with AHRS attitude sent from a D2 Pocket Panel.

	D2 Specifications
Dimensions	3.63" (92mm) x 3.26" (83mm) x 1.16" (29mm)
Weight	7.1 oz (201g)
Battery Power	Internal Li-Ion Battery At least 4 Hours Run Time from full charge (6-8 hours typical)
Charging	<ul style="list-style-type: none"> <li>• 110-240V AV wall adapter included</li> <li>• 10-30V DC vehicle adapter included</li> <li>• USB port for power in</li> </ul>
Warranty	One Year

Dynon logo and Pocket Panel are ©2015 Dynon Avionics